

Technical Data Sheet



Mara® Jet DI-2TV

Eco-solvent inkjet ink, especially designed for Roland printers operated in the TR2 ink configuration. Suitable for graphic applications.



Key features

- Color shades and ink formulations are compatible with Roland TR2 ink
- No use of any substance of concern
- High quality pigmentation
- Available in 500 ml bags (color shade 170 in 250 ml)
- Best machine compatibility / easy maintenance
- 3 years outdoor resistance (DIN EN 4892-2), except **DI-2TV 022 Orange** which is **not** suitable for outdoor use

Field of application

Substrates

The Mara® Jet DI-2TV substrate range includes:

- Self-adhesive foils (monomeric, polymeric, and cast PVC-films)
- Banner and mesh material
- Flexfoils for textile transfer
- Suitable papers
- Roll-up banners

Compatible printers / print heads

Mara® Jet DI-2TV is suitable for the following printers and printheads:

Roland

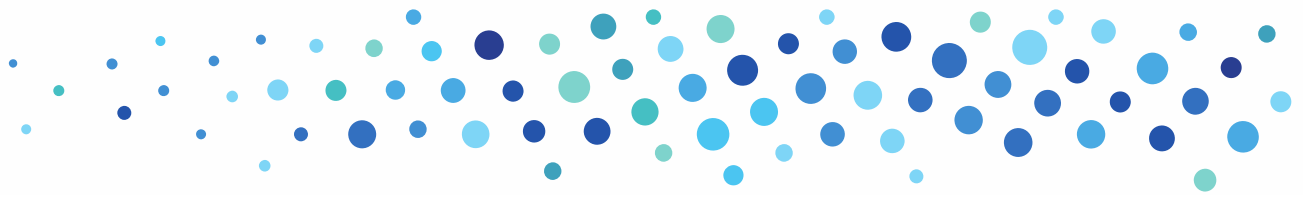
- TrueVisVG2-640
 - SG-540/SG-640
 - SG2-300/SG2-640
 - VG-540/VG-640
 - VG2-540
 - VF2-640
- TrueVis VG3
 - VG3-640
 - SG3-640
 - SG2-300
- TrueVis VG (upgraded to TR 2)
 - SG-540/SG-640
 - VG-540

Printheads

- Roland Flexfire
- Ricoh GH2220

Ink properties

Characteristics	DI-2TV
Plug & Print compatibility	+++
Resistance	++
Pigmentation	+++
Printing stability	+++



Drying

No changes to the drying parameters are required. However, adjustments may be necessary depending on substrate quality and ink deposit. For preheating, print heating, and drying, we recommend a temperature range of 35-45 °C.

Lightfastness

Pigments of high fade resistance are used which enable a 3-year vertical outdoor exposure, referred to the middle European climate and suitable substrates. Please note: The color shade **DI-MS 022 Orange** is **not** suitable for outdoor applications.

For fleet markings (e. g. vehicle advertising), an additional lamination or coating is required for mechanical protection.

Range

Basic Shades

- 429 Yellow
- 434 Light Magenta
- 438 Magenta
- 455 Light Cyan
- 459 Cyan
- 485 Light Black
- 489 Black

Further Products

- 170 White
- 022 Orange
- 067 Green

Auxiliaries

- DI-TV 401 Cleaner
- DI-UR 2 Cleaner

DI-TV 401: is used for rinsing/cleaning or short-term soaking of printheads and other ink-carrying components (e. g. after extended machine downtime) and are chemically adjusted to the ink formulation. It can also be used in the printer's integrated cleaning slot.

DI-UR 2: is used for cleaning printheads and capping tops as part of regular maintenance.

We recommend cleaning cycles at the start and end of production, as well as weekly cleaning of the nozzle plates.

Shelf life

The shelf life for an unopened ink container if stored in a dark room at a temperature of 15-25 °C is:

- 1 year for the color shades 170, 022, 067
- 2 years for all other inks

The ambient temperature may fall below this value only once for max. 2-3 days. Under different conditions, particularly other storage temperatures, the shelf life will be reduced. In such cases, the warranty given by Marabu expires.

Change-over

Switch & Print / full compatibility in chemistry and color shade; no flushing required:

Switching from the OEM ink to Mara® Jet DI-2TV does not require any preliminary or additional machine cleaning. Ink cartridges can be replaced individually as needed or as a complete set.

Switch & Swap / flushing required:

Please note: When switching from a third-party supplier, a cleaning step should be carried out using the third-party supplier's cleaner, followed by cleaning with DI-UR 2. Replacing the filters (dampers) is generally recommended, as well as checking whether any further spare parts need to be replaced.

Recommendation

For smooth production, always follow the guidelines provided by Marabu and the machine manufacturer. We recommend replacing ink filters annually and performing regular maintenance and service intervals.

Labeling

For Mara® Jet DI-2TV and its auxiliaries, there are current Material Safety Data Sheets available





according to EC regulation 1907/2006, informing in detail about all relevant safety data including labeling according to EC regulation 1272/2008 (CLP regulation). Such health and safety data may also be derived from the respective label.

Safety rules for solvent-based printing inks

Solvent-based inks contain substances that may irritate the skin. Therefore, take utmost care when working with solvent-based printing inks. Contaminated skin areas must be cleaned immediately with water and soap. Please follow the instructions on the labels and in the safety data sheets.

Note

All statements made here refer exclusively to standard color shades. For custom inks, the described features may deviate. For comprehensive legal information regarding the use of our products, please refer to our General Terms and Conditions (GTC) at www.marabu.com.

In the event of any queries, please contact:

Technical Hotline
Phone: +49 7141 691140
technical.hotline@marabu.com

Marabu GmbH & Co. KG | www.marabu.com
Version 06 - 05/2026

